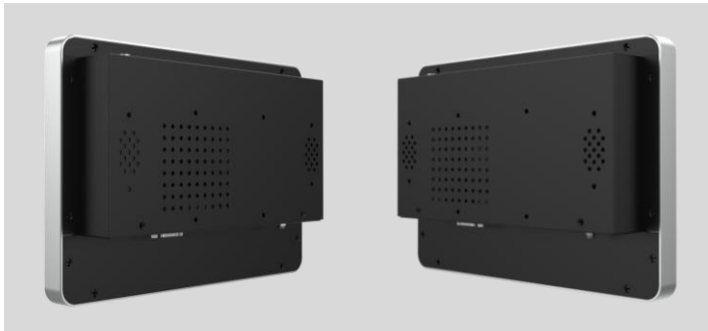


## 10 Inch

### Closed Frame Android AIO

#### ATL105



General Touch's breed of Closed Frame Touch computer is characterized by its unified design with AL Alloy frame edges. This sleek and sturdy contraption is loaded with enticing features and options that cater to different requirements including operating on Android, Windows and Linux platforms. The Android version is equipped with a Rockchip processor, while the Windows and Linux versions utilize powerful Intel processors.

Equipped with 10-point responsive PCAP Touch, several I/O interfaces and a high resolution display, connecting and adapting to other devices and peripherals is a breeze for applications in an assortment of scenarios. Also, a Closed frame design has the standard mounting options such as floating or standalone. Hence, GT's Closed frame Touch Computers are well positioned for use in kiosks, POS systems, financial services, self-service applications and information interactive displays.



Gaming



Kiosk



Vending Machine



Industrial Automation

- Support Windows, Linux, Android and mainstream OS
- AL Alloy frame, fashion and sturdy and durable
- General Touch PCAP technology, quality assurance
- VESA Mounting
- 43", 55" large size touch computer with OPS, support 4K solution
- Support customization and OEM/ODM
- Closed frame, compatible with various application

## SPECIFICATIONS

Product Name	10 Inch Closed Frame Android AIO	
Model	ATL105	
Motherboard Parameters		
SOC	Rockchip® RK3568	
CPU	Quad-core Cortex-A55, up to 2.0GHz	
GPU	Mali-G52	
Memory	2GB, LPDDR4X	
Storage	16GB, eMMC	
OS Support	Android 11	
Wi-Fi & Bluetooth	Onboard Module	
4G LTE	Mini PCI-e Module, optional	
LCD Panel Parameters		
Display Technology	Active Matrix TFT-LCD with LED Backlight	
Aspect Ratio	16:10	
Active Display Area (W x H)	216.96 mm x 135.60 mm	
Native Resolution	1280 x 800	
Response Time (Typ.)	30ms	
Display Colors	262k	
Luminance (Typ.)	400nits	
Contrast Ratio (Typ.)	900:1	
Viewing Angle (Typ.)	Horizontal (Left/Right) CR≥10	170° (85°/85°)
	Vertical (Up/Down) CR≥10	170° (85°/85°)
Touchscreen Parameters		
Touch Technology	PCAP	
Touch Point	10	
Light Transmission	≥85%	
Thickness	2.8mm ± 0.2mm	

I/O Port	
LAN	1 x RJ45 (10/100/1000Mbps)
USB	5 x USB 2.0 (Type-A), 1 x USB 3.0 (Type-A)
COM	1 x RS232
Display	1 x HDMI out
4G LTE	1 x Nano SIM slot
Storage Expansion	1 x TF slot
Antenna	1 x SMA-K, available on Wi-Fi & Bluetooth or 4G LTE model
Power	1 x DC Jack (Pin Outer Diameter 2.5mm, optional)
Overall Parameters	
Bezel/Case Colour	Silver/Black
Mounting Options	VESA 75mm x 75mm
Outline Dimensions	261.3mm x 179.3mm x 50.0mm (W x H x D)
Speaker	1 x 2W Built-in, optional
Power Consumption	23W Max
Operating Altitude	≤3000m
Temperature	Operating: 0°C to 40°C, storage: -20°C to 60°C
Humidity (Non-condensing)	Operating: 20% to 80%, storage: 10% to 90%
Carton Dimensions	441mm x 370mm x 178mm (W x H x D)
Weight	TBD
MTBF	50,000 Hours Demonstrated
Agency Approvals	CE, FCC
Warranty	2 years

Ordering Information		
Part Name	Part Number	Description
ATL105-RC3-2B00-A02-1.0	10302010046R	2GB LPDDR4X, 16GB eMMC, 1 x 2W Built-in Speakers,Wi-Fi&BT 2 in 1 Module
Optional Accessories		
Part Name	Part Number	Description
US Power Cable	30301010010R	1.5m
EU Power Cable	30301010011R	1.5m
UK Power Cable	30301010018R	1.5m
Power Adapter	30207010005R	Input Voltage Range: 100V - 240V AC Output : 12V DC $\pm$ 5%/4.17A DC Barrel Plug Pin Inner Diameter: 2.5mm

Go to [www.generaltouch.com](http://www.generaltouch.com) for more products and information, or contact us.

General Touch Co., Ltd. reserves the right to change or update, without notice, any information contained herein; to change, without notice, the design, construction, materials, processing or specifications of any products; and to discontinue or limit production or distribution of any products.

**Tel:** 0086-28-85124120

**Fax:** 0086-28-85124115

**E-mail:** [info@generaltouch.com](mailto:info@generaltouch.com)

<http://www.generaltouch.com>