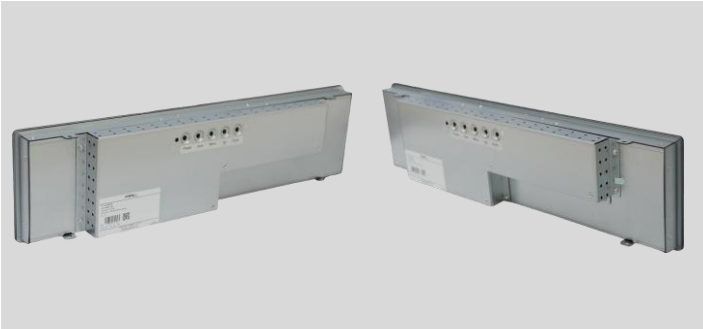


16.4 Inch

Bar-type Touchmonitor

OTB163



The bar-type touchmonitors offer attention-grabbing screens with their elongated shapes compared to the familiar 16:9 aspect ratio of common monitors. They will stand out among gaming machine button decks, in retail spaces, and public venues, which will instantly draw gazes from curious onlookers. Equipped with HDMI and DP, these touchmonitors can be easily connected to any regular PC. Utilizing high-quality panels from stable supply chains and driver-free plug-and-play functionalities, they offer seamless touch capabilities right out of the box. A 4mm tempered cover-glass protects the screen from unpredictable mischief when deployed in public places. Customization services are available to satisfy unique requirements.



Kiosk



Vending Machine



Gaming

- Unique aspect ratios in a range of eye-catching sizes - 12", 15", 16", and 19" - now available to captivate viewers
- Flexible installation options, easy integration and low maintenance
- AD board with special image algorithm supports native resolution input for resized panel, enabling full-screen touchmonitors
- Plug-and-Touch convenience with no special driver required, saves time and effort during setup
- Built with a 4mm tempered glass with exceptional durability and impact resistance

SPECIFICATIONS

Product Name	16 Inch Bar-type Touchmonitor
Model	OTB163
LCD Panel Parameters	
Display Technology	TFT-LCD
Aspect Ratio	16:3
Active Area (W x H)	410.80 mm × 72.40 mm
Native Resolution	1366 × 238 @ 60 Hz
Response Time (Typ.)	18 ms
Display Colors	16.7 M
Luminance (Typ.)	400 nits
Contrast Ratio (Typ.)	3000:1
Viewing Angle (Typ.)	Horizontal (left/right) CR≥10 89° /89°
	Vertical (up/down) CR≥10 89° /89°
Touch Screen Parameters	
Touch Technology	PCAP
Surface Treatment	Tempered Strengthened Optional: Anti-Glare
Thickness(Total)	4.5 mm
Light Transmission	≥ 83%
Response Time	8 ms
Touch Screen Interface	USB
Touch Point	10
Overall Parameters	
Case/Bezel Color	Gray
Mounting Options	Bracket, see mechanical drawing for details
Outline Dimensions (W×H×D)	457.0 mm × 120.0 mm × 47.8 mm
Power Supply	Input Voltage Range: +12V DC ± 5%, Coaxial power jack 2.5mm pin outer diameter
On Screen Display (OSD)	Control (back): Power, Auto, Up, Down, Menu
Power Consumption	20 W (Monitor without RGB LED Lights)
Operating Altitude	≤ 3000 m

Temperature Range	Operating: 0°C to 40°C, storage: -20°C to 60°C
Humidity (Non Condensing)	Operating: 20% to 80%, storage: 10% to 90%
I/O	DP, HDMI, USB (Type B)
Accessories	Optional
Carton Box Dimensions	TBD
Weight	TBD
MTBF	50,000 hours demonstrated
Agency Approvals	CE/FCC/UKCA
Warranty	3 years

Ordering Information

Model	Part Number	Description
OTB163-RC5000-UD4500-1.0	10202010685R	16", 16:3, 400 nits, PCAP, USB, DP / HDMI

Optional Accessories

Model	Part Number	Description
HDMI Cable	30302030001R	HDMI Cable A Male-A Male 1500mm
DP Cable	30302010001R	DP Cable Male-Male 1500mm
Power Adapter	30207010005R	Power Adapter 12V/50W/2.5mm/1500mm
Power Cord	30301010010R	US
	30301010011R	EU 1500mm
	30301010018R	UK

Go to www.generaltouch.com for more products and information, or contact us.

General Touch Co., Ltd. reserves the right to change or update, without notice, any information contained herein; to change, without notice, the design, construction, materials, processing or specifications of any products; and to discontinue or limit production or distribution of any products.

Tel: 0086-28-85124120

Fax: 0086-28-85124115

E-mail: info@generaltouch.com

<http://www.generaltouch.com>